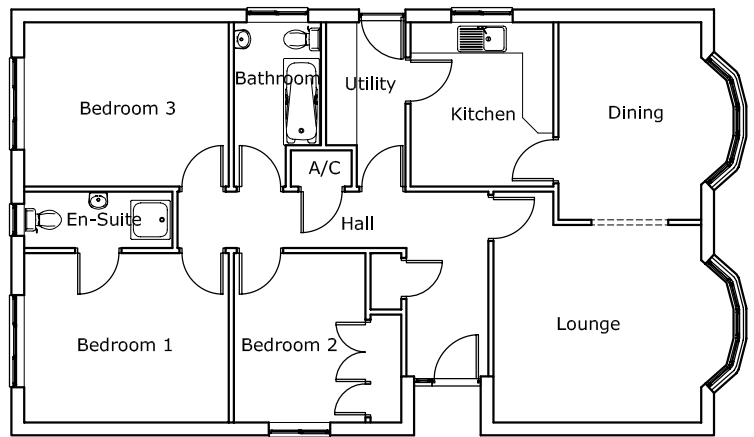
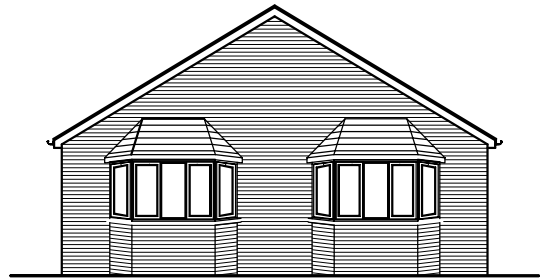


total floor area 114 m²
 frontage - 8.3m
 depth - 13.7m



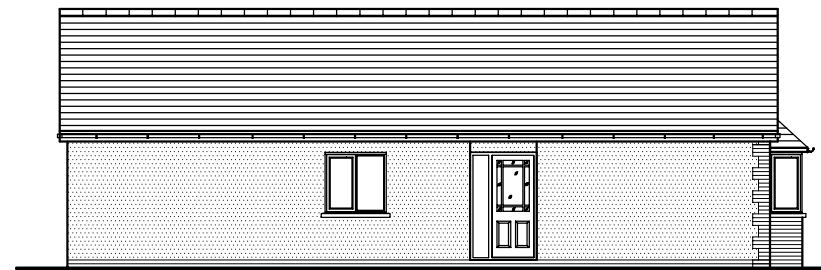
FLOOR PLAN



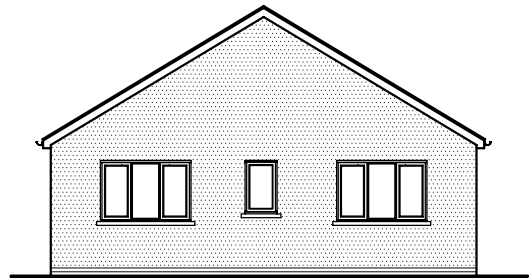
FRONT ELEVATION

Kitchen	2.8m x 3.2m
Dining room	2.8m x 3.9m
Lounge	4.1m x 3.9m
Utility	1.6m x 2.4m
Bedroom 1	4m x 3.3m
Bedroom 2	2.6m x 3.3m
Bedroom 3	4.0m x 3.2m
Bathroom	1.7m x 3.2m
En-suite	1.1m x 2.3m

Room dimensions indicated above are approximate only.



SIDE ELEVATION



REAR ELEVATION



SIDE ELEVATION